

solutions

Industry Updates and Solutions for Conveyor Material Handling Applications.

Providing the World Material Handling Industry with Productive, Safe and Reliable "Complete Conveyor Solutions."

ASGCO®

Complete Conveyor Solutions

ASGCO Tru-Trainer Specialty Idlers Eliminate Side-Travel Problems on Conveyor Belts

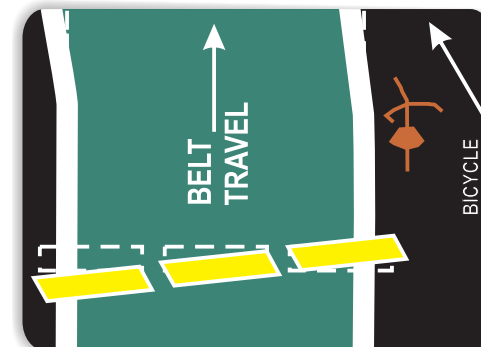
(Part 1 of a 2 Part Series)

Basic Rules of Conveyor Belt Tracking:

- The conveyor structure must be "True" (relative to the center-line) and "Level" (side-to-side).
- All pulleys, snub rollers, carrying and return idlers must be "Square" with the frame (perpendicular to the belt center-line) and parallel to each other.
 - Is the pulley lagging worn?
 - Belt Tension must be great enough to prevent slippage between the drive pulley and the belt. Tension must also be enough to cause the belt to conform to the pulley crowns. Slippage will cause excessive wear to both drive pulley lagging and the return side of the belt.
- Cleanliness is essential to good conveyor belt tracking. No buildup of carry-back on the idlers or pulleys.
- Ensure the belt is stopped when making adjustments and remember that is better to make several small adjustments and be careful not over compensate.
- Start tracking and adjusting idlers on the return run, working toward the tail pulley, followed by adjusting the idlers on the top run in the direction of belt travel.
- Tracking a conveyor belt should never be done by adjusting pulleys. This can cause uneven conveyor belt stretch and or pulley and shafting problems.



As seen in the February 2009 issue of World Coal.



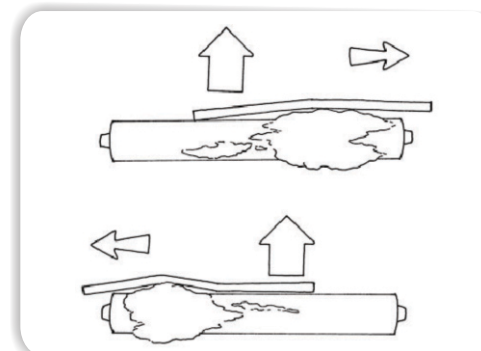
The 'handlebar effect'. Looking at the conveyor belt in the direction of belt travel, steer the idlers in the same way as bicycle handlebars until the conveyor is moved to the desired position. The training effort is caused by the friction force of the scuffing action of the conveyor belt as it passes over the cocked idler.



ASGCO Tru-Trainer's unique and simple design provides highly effective belt tracking no matter the conditions.



Mis-tracking, causing the conveyor belt to cut into the frame of the conveyor.



Carry-back on the idlers can also cause the handlebar effect. The belt will always move and make contact with the side it touches first, therefore always ensure that proper belt cleaners are installed and maintained to help eliminate this possibility.

[Click for More Information](#)

For more information and benefits of ASGCO Tru-Trainer Specialty Idlers contact us at www.asgco.com