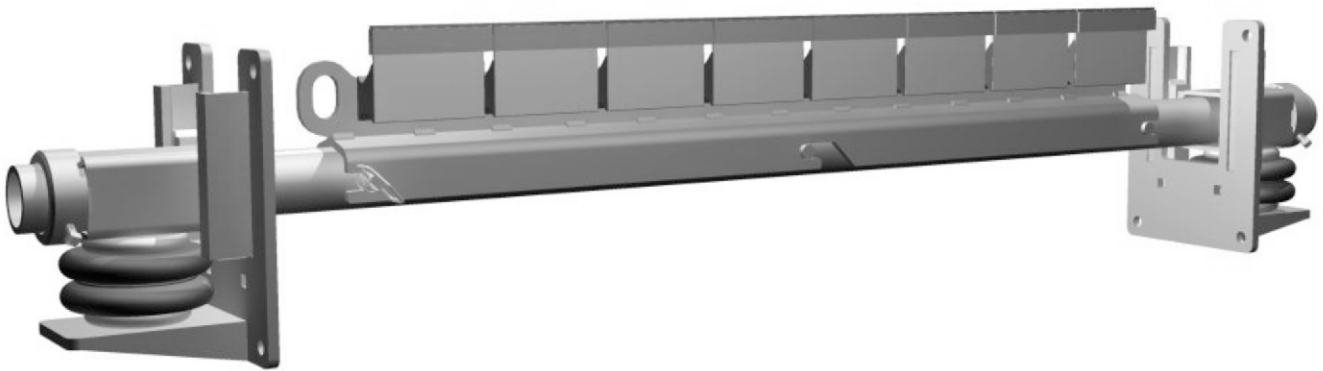




RAZOR-BACK MDX

WITH AIR-SHOC TENSIONER®

INSTALLATION, OPERATION & MAINTENANCE INSTRUCTIONS



Check us out at
www.asgco.com

Customer Service
800-344-4000



24 Hour Emergency
Service and Parts
610-821-0210



ASGCO Mfg., Inc.
301 Gordon Street
Allentown, PA 18102
610-821-0216
FAX 610-778-8991

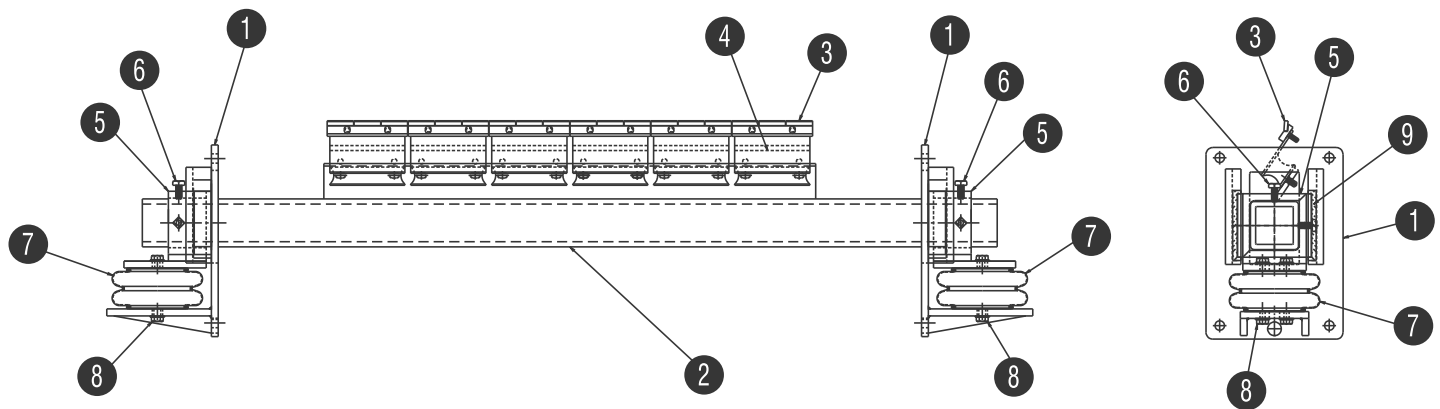
Important Safety Notice

Always observe the basic rules of safety when working with any conveyor system. To avoid injury and equipment damage, be sure that all controls to the conveyor are locked out and the power source is disconnected at all times during installation.

Overall View

If mounting structure is not available, additional steel may have to be added. *Note: Excess mounting tube may be trimmed after installation.*

Components Diagram



- | | | | |
|---|------------------|---|-------------------|
| 1 | Mounting Bracket | 6 | Set Screw |
| 2 | Mounting Tube | 7 | Expanding Air Bag |
| 3 | Blade Tip | 8 | 3/8-16 Bolt |
| 4 | 6" Blade Segment | 9 | UHMW Guide |
| 5 | Slide Mount | | |

The RazorBack MDX is a Secondary Cleaner designed to be installed on the return side of the belt.

1. Determine Cleaner Mounting Location

The RazorBack is a Secondary Cleaner and as such should be located on the return side of the belt after the belt leaves the head pulley as shown in Figure 1.

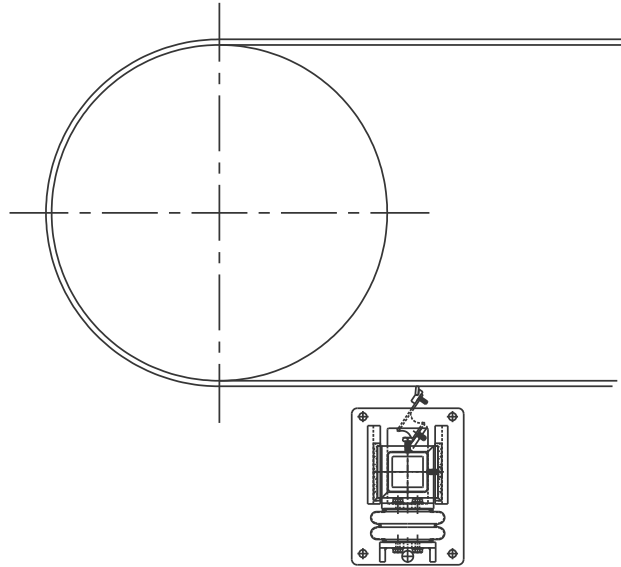


Figure 1: Typical Mounting Position

2. Attach Mounting Brackets

Determine the desired location of the mounting brackets. Locate the mounting bracket so that the top of the slot is approximately even with the bottom of the belt (Figure 2). If required, mark and cut slots out of the chute sidewall to allow the support tube to pass. The required slot sizes/locations are shown for each of the two blade styles. Attach the mounting brackets to the conveyor frame (Figure 3).

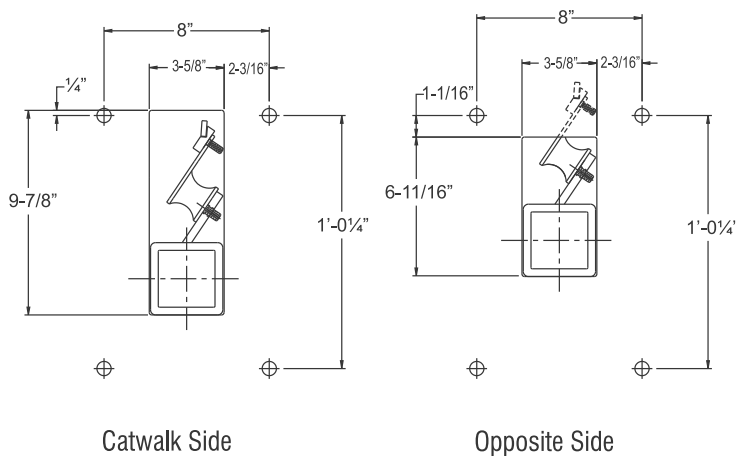


Figure 2

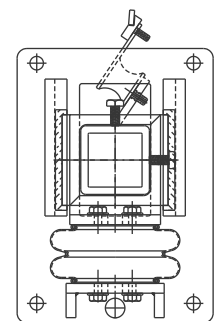


Figure 3

1. Installing Tensioners

The Razorback MDX requires tensioners on both sides of the conveyor to apply even pressure across the belt. Once the Blade Mounting Tube with the blades attached is placed under the belt and into the two cutouts, it is time to install the tensioners. Slide the Tensioner Assembly over the mounting tube and slide it against the conveyor frame or chute. Do the same on the opposite side. Bolt the mounting bracket in place with the bolts provided. Next center the Mounting Tube and Blades under the belt and tighten the set screws.

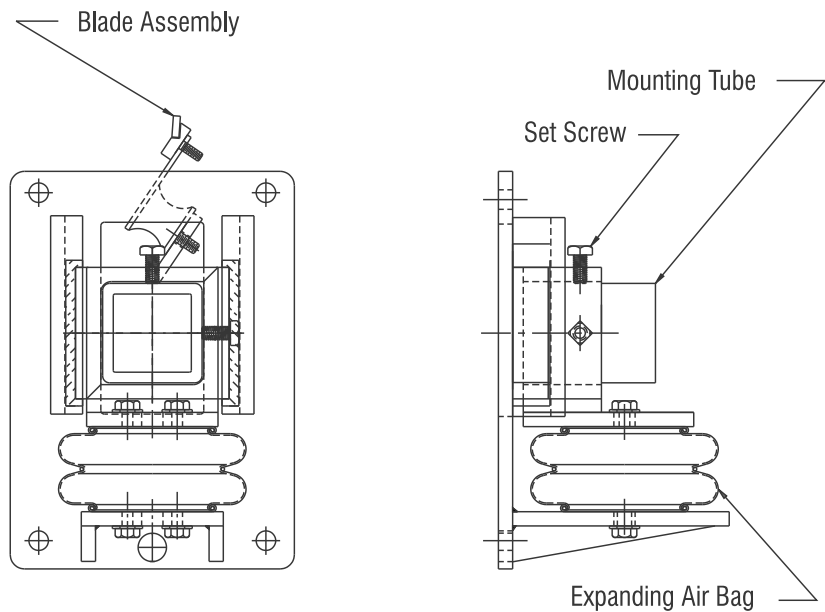


Figure 4: Tensioner

3. Blade Positioning and Alignment

With the support tube in position, align the blade tip so that it is perpendicular to the belt. Center the blade on the belt by sliding the support tube in the support tube square collars. Firmly tighten the set screws (to about 70 ft-lbs.) on the support tube collar to affix the translation of the support tube.

4. Assembling the Tensioner

The Tensioner will be packaged unassembled. The package will include all of the required parts and hardware to assemble one complete Razorback MDX unit. The package will also include 25 ft of airline and all necessary fittings to feed both air bags. The Air control box will be delivered assembled. (See Figure 6)

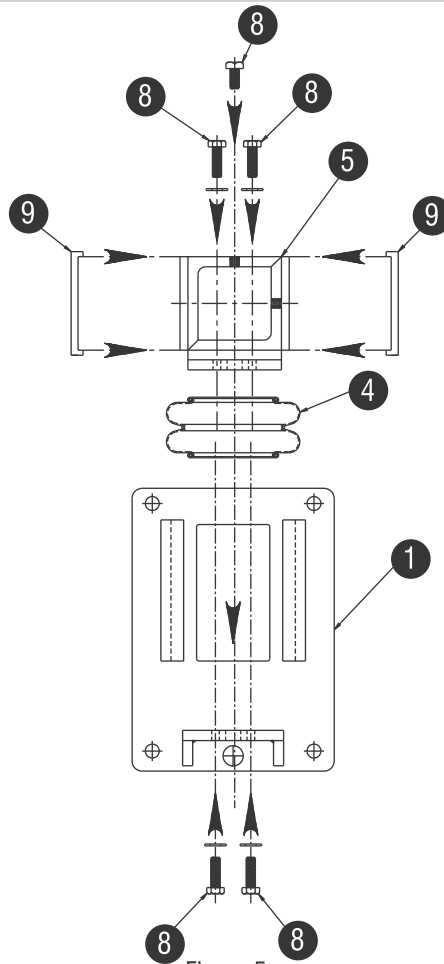


Figure 5

4. Tensioning and Operation

The tension of the blade against the belt is determined by the pressure applied to the expending air bags. Most MDX applications will have an air-bag located on both sides of the blade mounting tube as shown below. The air pressure can be controlled by the air control box supplied by ASGCO. Or by an owner supplied air regulator. The pressure should range from 8 psi to 20 psi.

A good place to start is 1/4 psi. per every inch of blade width.

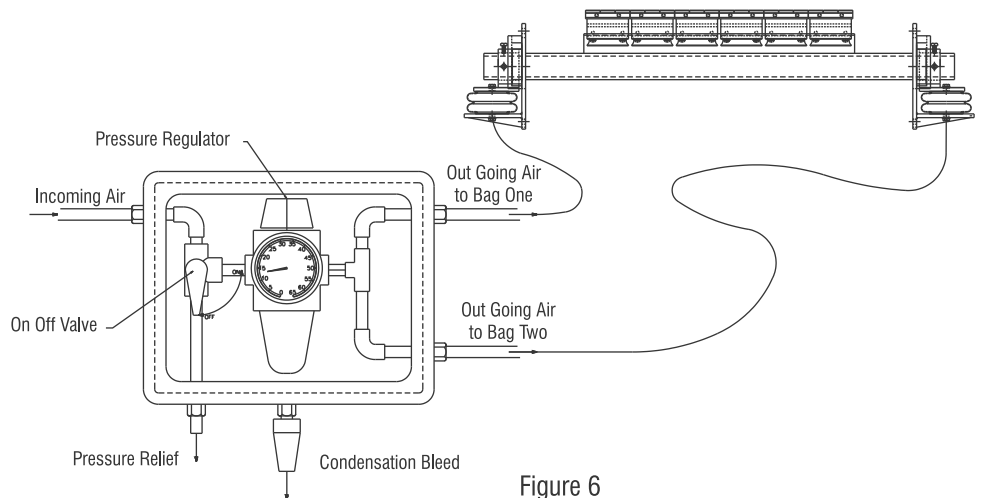


Figure 6

MAINTENANCE

After one day of operation:

- 1.) Inspect the cleaner for proper belt cleaning and operation.

Weekly:

- 1.) Frequent inspection is the key to proper belt cleaning and easy Scraper servicing. Weekly inspections are recommended, but actual service frequency may vary widely depending on various plant operating conditions.
- 2.) Wash the entire cleaner regularly to prevent excessive buildup. If material tends to accumulate on the Scraper Assembly then possible scraper relocation may be in order.
- 3.) Carefully inspect the wear tips of the cleaner blades. Make sure blades are not chipped or worn out.
- 4.) Inspect the belt surfaces and edges for cracks, splits, tears, holes or any other worn or damaged condition occurring on the surfaces or edges of the belt itself. If necessary make repairs to the belt.

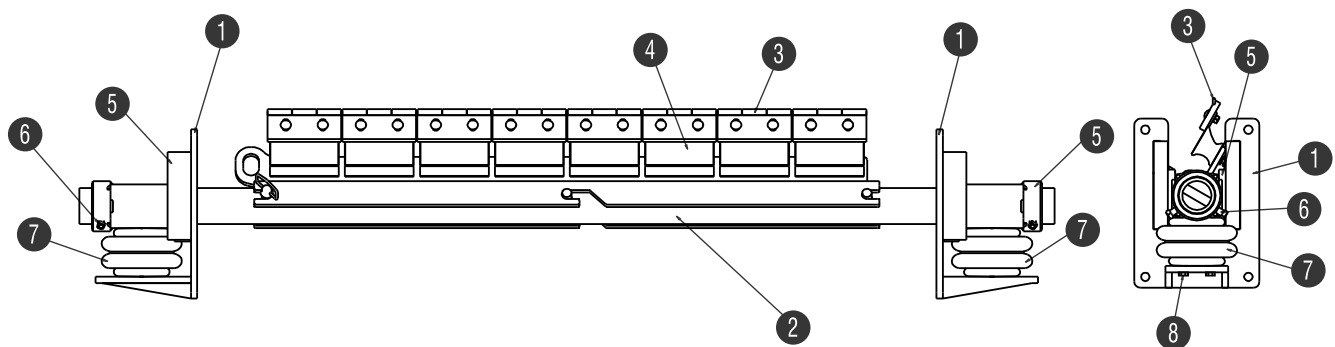
REPLACEMENT AND RE-TENSIONING OF CLEANER BLADES

- 1.) Disengage air pressure to lower blades from the belt.
- 2.) If blades are accessible with out removing the mounting tube, the tube can remain in place and you can move on to step 5.
- 3.) To remove the mounting tube, loosen the mounting tube set screws on the opposite side that the tube will be removed from.
- 4.) On the side the tube is being removed, unbolt the tensioner assembly and slide the tensioner and the tube toward you supporting the opposite side of the tube. The tensioner can be removed later if needed.
- 5.) Loosen and remove the bolts holding the blades to the rubber cushions.
- 6.) Remove the worn blades and discard.
- 7.) Inspect all of the rubber cushions before installing new blades
- 8.) Position and align new blades, reinstall bolts and tighten.
- 9.) If needed re-install the mounting tube and tensioner according to instructions.

Information

Key	Description	Part Number
1	Razorback MDX Mounting Bracket	ASG-MDX-RB-MTG-BRACKET-(BW) [BW]=Belt Width
2	RazorBack Mounting Tube	ASG-MDX-RBMT - (BW)
3a	MDX V-Tip Carbide Blade	ASG-MDX-BLD-RZ-6-TC (Tungsten Carbide)
3b	MDX F-Tip AR Blade	ASG-MDX-BLD-RZ-6-AR (AR-Steel)
4	MDX Blade Holder Cushion	ASG-CUS-RZ-6C
5	Slide Mount	ASG-MDX-RB-SLIDE
6	Set Screw	AS-SSH-8X1.5-NCG8
7	Expanding Air Bag	ASG-MDX-AIRBAG
8	3/8-16 x 1" Bolt	ASG-BOLT-C06X016
9	UHMW Guide	ASG-MDX-RZ-UHMW-GUIDE
10	Air Control Box	ASG-MDX-ACB
11	3/8 ID Air Hose	HS-AIRFLEX-06
12	3/8 ID Power Crimp Coupling	CV-6-6MBX

Call your ASGCO Distributor for any questions or replacement parts



- | | | | |
|---|------------------|---|-------------------|
| ① | Mounting Bracket | ⑥ | Set Screw |
| ② | Mounting Tube | ⑦ | Expanding Air Bag |
| ③ | Blade Tip | ⑧ | 3/8-16 Bolt |
| ④ | 6" Blade Segment | ⑨ | UHMW Guide |
| ⑤ | Slide Mount | | |

TROUBLE SHOOTING

PROBLEM	SOLUTION
<i>Excess vibration of the scraper.</i>	Make certain all bolts are tight. If belt is non-reversing, rotate the blade about 5 degrees in the direction of the belt movement.
<i>Excess carryback.</i>	Check for proper Scraper tension. Put additional tension on cleaner. <i>Check for wear on the cleaning tips</i> Check thickness of carryback. If the cleaner must remove more than about 1/8" of material then an additional cleaner may be needed.
<i>Excess belt movement, cupping</i>	Install a hold down roller to stabilize the belt surface.
<i>Unable to tension scraper properly, belt moves away from blades.</i>	Install a hold down roller to reduce sag of the belt when tensioning.
<i>Frozen material on scraper.</i>	Place heaters near scraper to melt frozen material. <i>(Use caution not to burn belt or cleaner)</i>